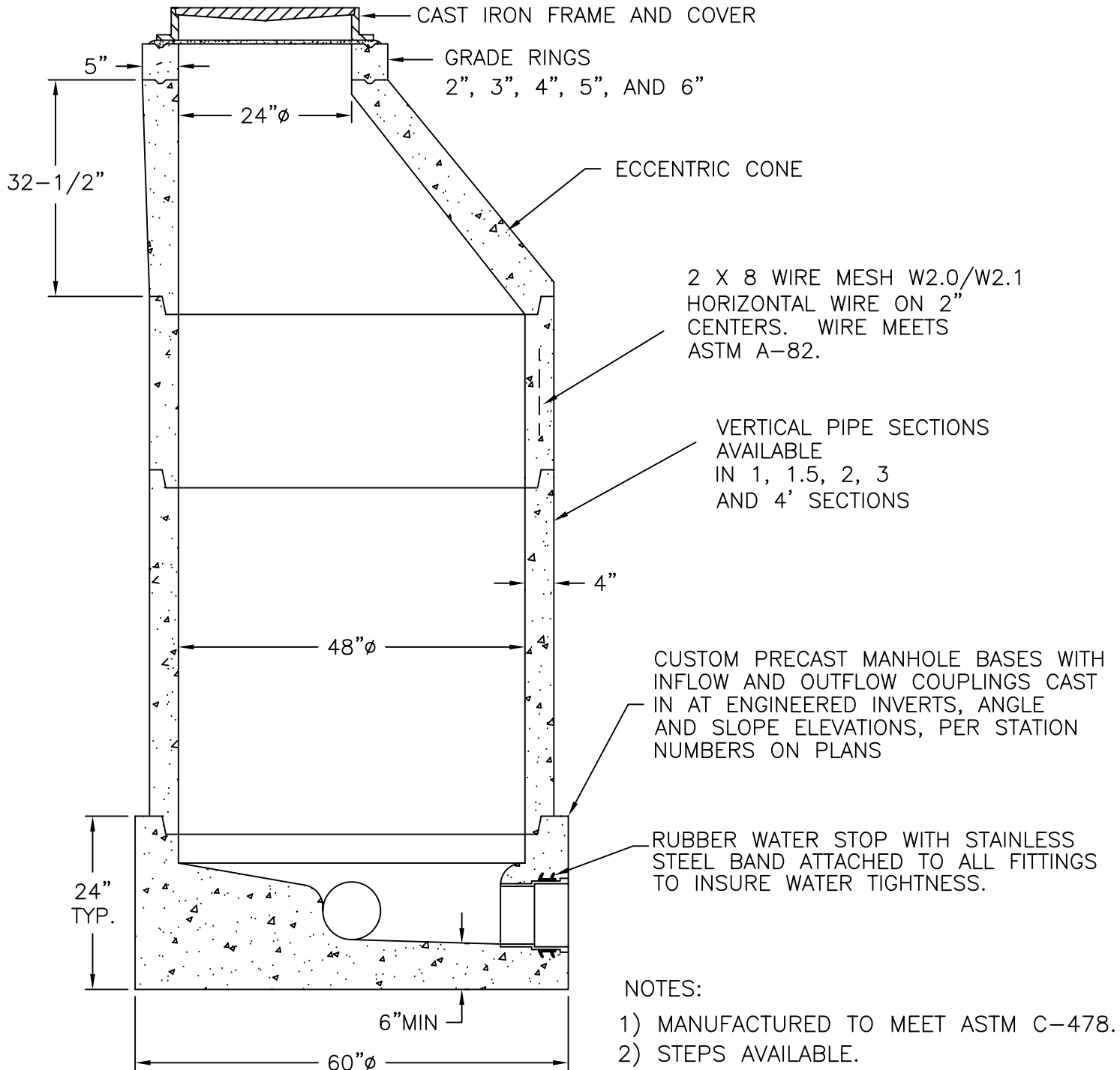


MANHOLE PIPE • DRAINAGE INLETS • STORM WATER/OIL INTERCEPTORS • UTILITY VAULTS & BOXES • CUSTOM PRECAST

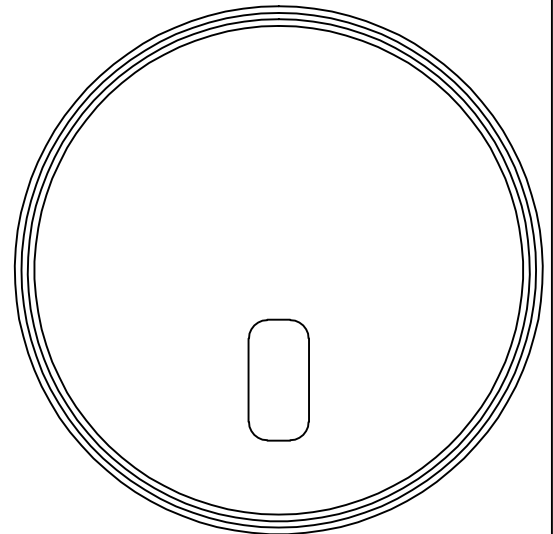
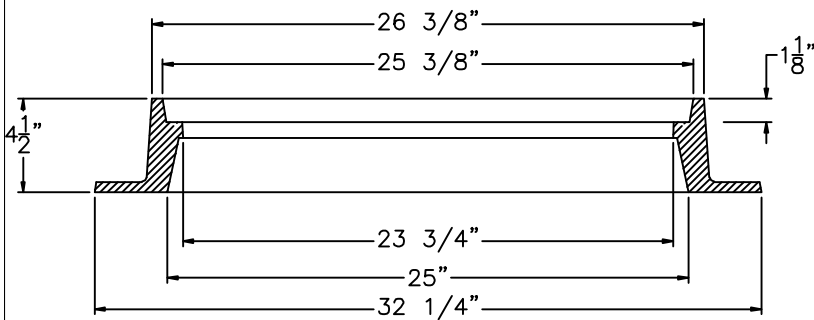
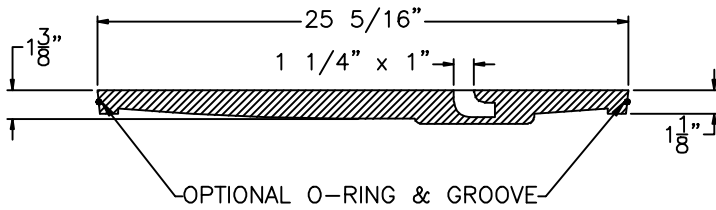
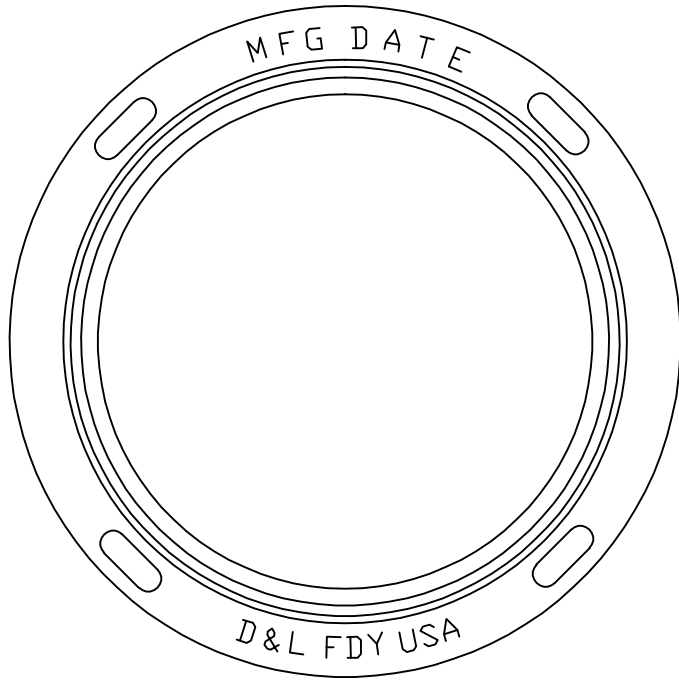
(530) 243-2562
 FAX (530) 243-6881
 www.cookconcreteproducts.com
 e-mail:
 Info@cookconcreteproducts.com

5461 EASTSIDE ROAD
 P.O. BOX 720280
 REDDING, CA 96099



- NOTES:
- 1) MANUFACTURED TO MEET ASTM C-478.
 - 2) STEPS AVAILABLE.
 - 3) ALL JOINTS TO BE SEALED WITH KENT SEAL NO. 2 OR GROUT.

48" MANHOLE
 W/ECCENTRIC
 CONE ASSEMBLY



CAST IRON
TO CONFORM TO
ASTM A-48, CLASS 30B

A-1024

D&L MODEL #

DRAWN BY: ADAM KROUPA
D&L Foundry (Not to Scale)

DATE: 1-28-07

D&L FOUNDRY & SUPPLY

CALIFORNIA SALES: (800)-422-0848
WASHINGTON SALES: (888)-765-0054
UTAH SALES: (800)-453-9802

Kent Seal #2, Premium Grade Butyl Sealant

Technical Data Sheet

Description

Kent Seal #2 is a premium grade butyl based sealant designed to be permanently flexible, tacky, moisture resistant and resistant to deterioration due to dilute chemical exposure.

Approvals

Meets or exceeds material requirements* of:

- ASTM C990-96
- SS-2-210
- SS-S-210A

Use

Flexible rope gasket for sealing joints in precast concrete.

Limitations

Not recommended for use with oils or hydrocarbon solutions.

Packaging

Kent Seal is supplied in roll form, on easy release liner.

Instructions

All installation surfaces must be clean and dry. Primer is recommended for damp concrete and installations below 40°F (5°C).

Application Properties	
Service Temperature	-40°F to 250°F -40°C to 120°C
Application Temperature	0°F to 120°F -18°C to 50°C
Storage	Under 120°F Under 50°C
Shelf Life	1 year

* Except for flash point & fire point.

Technical Data		
Physical Properties	Typical Values	Test Method
Color	Black	Visual
S.G.	1.25 to 1.35	ASTM D71
Hydrocarbon Content	50% Min.	ASTM C990
Ash Content	45% to 48%	AASHTO T111
Ductility @ 77°F (25°C)	6.0 cm	ASTM D113
Rebnd./Recov. @ 77°F (25°C)	4% to 7%	ASTM C972
@ 32°F (0°C)	5% to 10%	
Comp. Index @ 77°F (25°C)	(lbf per cu.in.) 40 to 55	ASTM C972
@ 32°F (0°C)	130 to 160	
Solids Content	99%	ASTM D6
Elevated Temperature Flow	No sag or shape change after 14 days @ 158°F (70°C)	ASTM C766
Adhesion After Impact	No loss of adhesion	ASTM C990
Cone Penetration @ 77°F (25°C)	55 to 85	ASTM D217
Chemical Resistance	No visible change after 30 days immersion in 5% solution of HCL, H2SO4, NaOH, KOH, H2S	SS-S-201 Sec. 3.6
Low Temperature Flexibility	No cracking or adhesion loss @ -10°F (-23°C)	ASTM C765

Note: The foregoing information is published as general information only.



Head Office & Canadian Manufacturing Facility

77 Carlingview Drive
Toronto, Ontario Canada M9W 5E6
☎ (416) 675-7822 TOLL FREE (800) 268-8479
FAX (416) 674-6960 TOLL FREE (888) 674-6960

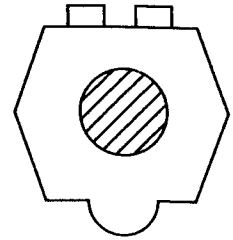
U.S.A. Manufacturing Facility

871, Deming Way
Sparks, Nevada, USA 89431
☎ (702) 359-7016 TOLL FREE (800) 648-1266
FAX (702) 359-0873

LANE Polypropylene Manhole Steps

SPECIFICATIONS:

All Lane Poly Steps meet the requirements of ASTM C-478, AASHTO M-199, WISHA and all OSHA specifications. The polypropylene conforms to ASTM D-4104. The 1/2" Grade 60 deformed reinforcing bar meets ASTM-A-615.



LONGEVITY:

Copolymer polypropylene is known for its high impact strength and superior resistance to the corrosive environments found in sewers.

SAFETY:

Lane poly steps have sure footed self-cleaning tread design. Poly steps will not spark so there is no danger of igniting sewer gases.

INSTALLATION:

Driven into two parallel 1" diameter holes drilled 13" or 10" on center, 3-1/2" deep.

